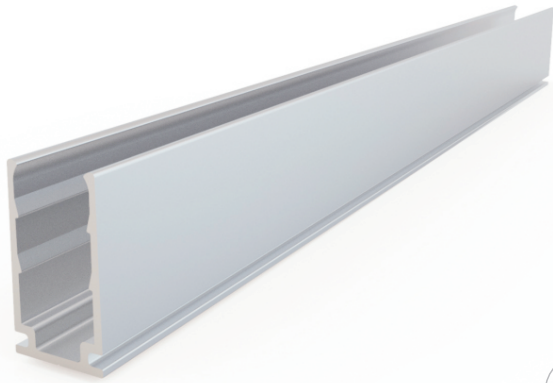


Aluminum Profile

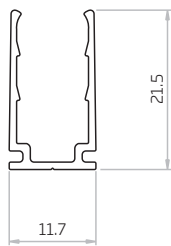


It uses high-quality 6063 aluminum with thin-wall, light-weight design to fit tightly the light body. It is deformation and rust resistant, and cost-effective.

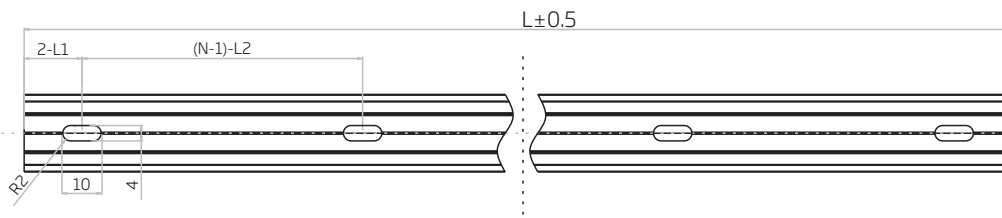
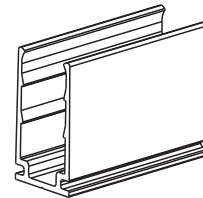
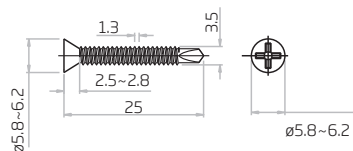
Please refer to the applicable installation ways.

Test Object	No.	Experiment Item	Standard
Metal Parts	1	Weather Resistance-Salt Spray	IEC 68-2-11
Mounting profile	2	Clamping force	CLEAR-defined

Dimension: mm



Tolerance: $\pm 0.3\text{mm}$

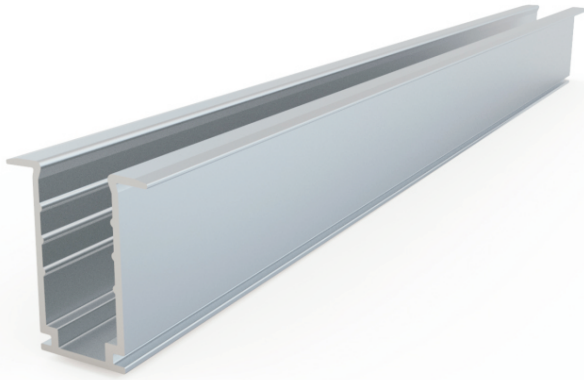


Note:

- 2-L1 refers to two of symmetric L1 in each piece of profile.
 - (N-1)-L2 refers to (N minus one) of symmetric L2 in each piece of profile.
- "N" hereby stands for its corresponding "Hole Number" in the below table

Item Code	Standard Length	L1	L2	Slotted Hole	Hole Number
F10-A/PL-35MM-AL	35mm/1.38in	17.5mm/0.69in	/	4*10mm/0.16*0.39in	1
F10-A/PL-500MM-AL	500mm/19.68in	50mm/1.97in	200mm/7.87in	4*10mm/0.16*0.39in	3
F10-A/PL-1000MM-AL	1000mm/39.37in	100mm/3.93in	200mm/7.87in	4*10mm/0.16*0.39in	5
F10-A/PL-2000MM-AL	2000mm/78.74in	100mm/3.93in	200mm/7.87in	4*10mm/0.16*0.39in	10

Flange Aluminum Profile

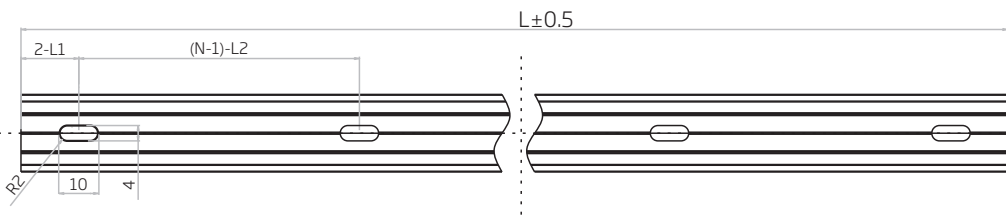
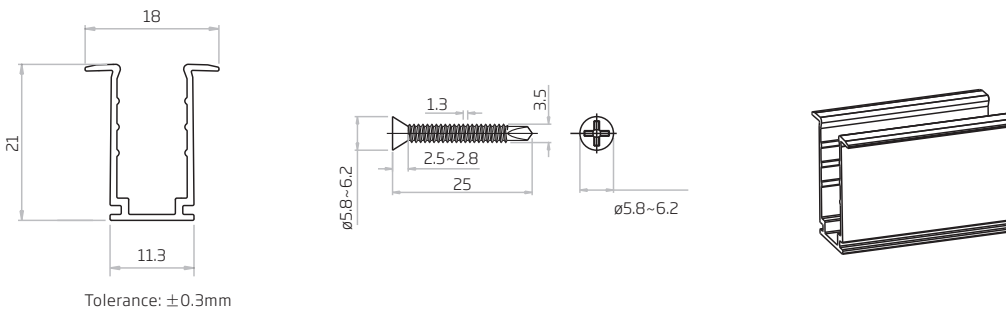


It uses high-quality 6063 aluminum with thin-wall, light-weight design to fit tightly the light body. It is deformation and rust resistant, and cost-effective. The "Flange" design is more suitable for recessed installation, better fits with the mounting groove and minimizes the operation tolerance during construction to some extent, like shielding the rough edges and the gaps of oversized groove.

Please refer to the applicable installation ways.

Test Object	No.	Experiment Item	Standard
Metal Parts	1	Weather Resistance-Salt Spray	IEC 68-2-11
Mounting profile	2	Clamping force	CLEAR-defined

Dimension: mm

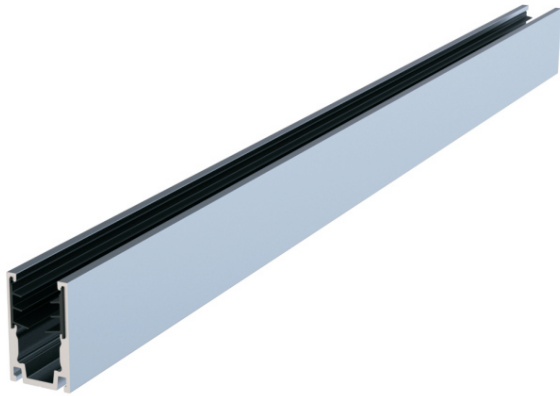


Note:

- 2-L1 refers to two of symmetric L1 in each piece of profile.
 - (N-1)-L2 refers to (N minus one) of symmetric L2 in each piece of profile.
- "N" hereby stands for its corresponding "Hole Number" in the below table

Item Code	Standard Length	L1	L2	Slotted Hole	Hole Number
F10-FA/PL-35MM-AL	35mm/1.38in	17.5mm/0.69in	/	4*10mm/0.16*0.39in	1
F10-FA/PL-500MM-AL	500mm/19.68in	50mm/1.97in	200mm/7.87in	4*10mm/0.16*0.39in	3
F10-FA/PL-1000MM-AL	1000mm/39.37in	100mm/3.93in	200mm/7.87in	4*10mm/0.16*0.39in	5
F10-FA/PL-2000MM-AL	2000mm/78.74in	100mm/3.93in	200mm/7.87in	4*10mm/0.16*0.39in	10

Serrated Aluminum Profile

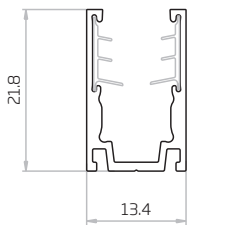


Specialized for the LED Flex Linear light, it was developed by combining the advantages of 6063 aluminum and elastic serrated tape. The inside elastic serrated tape as the grabbing force to keep continuous strong clamping force on the light body and protect the light from the damage caused by the large friction in the process of installation and dismantlement.

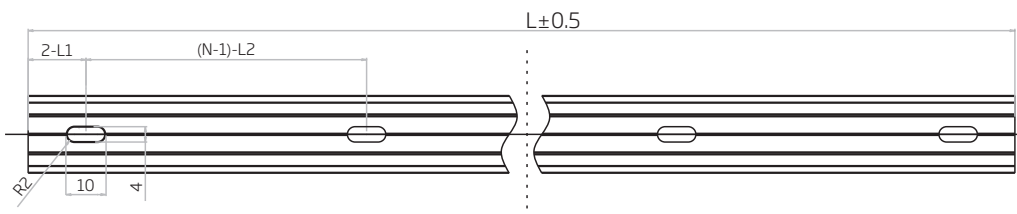
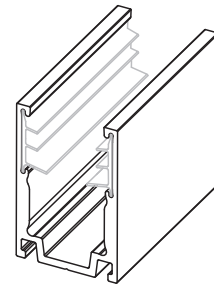
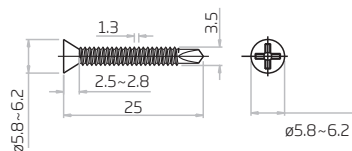
Please refer to the applicable installation ways.

Test Object	No.	Experiment Item	Standard
Metal Parts	1	Weather Resistance-Salt Spray	IEC 68-2-11
Mounting profile	2	Clamping force	CLEAR-defined

Dimension: mm



Tolerance: $\pm 0.3\text{mm}$

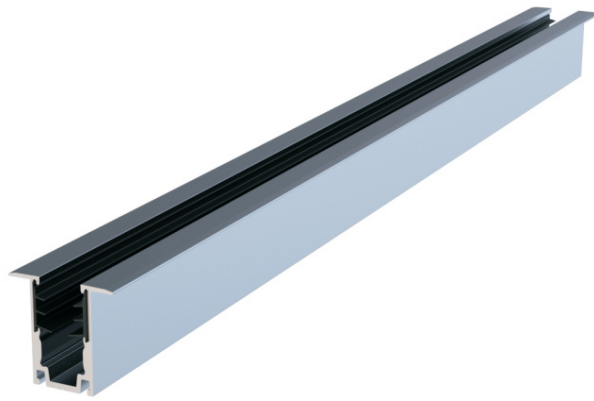


Note:

- 2-L1 refers to two of symmetric L1 in each piece of profile.
 - (N-1)-L2 refers to (N minus one) of symmetric L2 in each piece of profile.
- "N" hereby stands for its corresponding "Hole Number" in the below table

Item Code	Standard Length	L1	L2	Slotted Hole	Hole Number
F10-SA/PL-20MM-AL	20mm/0.787in	10mm/0.39in	/	4*10mm/0.16*0.39in	1
F10-SA/PL-500MM-AL	500mm/19.68in	50mm/1.97in	200mm/7.87in	4*10mm/0.16*0.39in	3
F10-SA/PL-1000MM-AL	1000mm/39.37in	100mm/3.93in	200mm/7.87in	4*10mm/0.16*0.39in	5
F10-SA/PL-2000MM-AL	2000mm/78.74in	100mm/3.93in	200mm/7.87in	4*10mm/0.16*0.39in	10

Flange Serrated Aluminum Profile



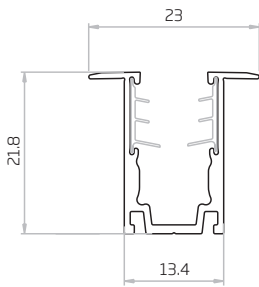
Specialized for the LED Flex Linear light, it was developed by combining the advantages of 6063 aluminum and elastic serrated tape. The inside elastic serrated tape as the grabbing force to keep continuous strong clamping force on the light body and protect the light from the damage caused by the large friction in the process of installation and dismantlement.

The "Flange" design is more suitable for recessed installation, better fits with the mounting groove and minimizes the operation tolerance during construction to some extent, like shielding the rough edges and the gaps of oversized groove.

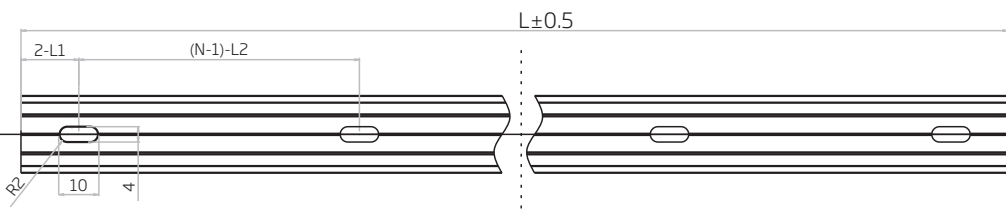
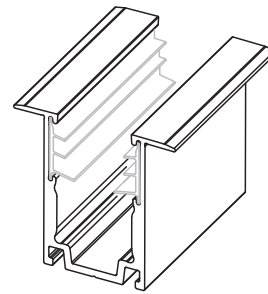
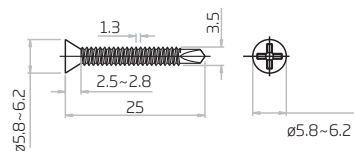
Please refer to the applicable installation ways.

Test Object	No.	Experiment Item	Standard
Metal Parts	1	Weather Resistance-Salt Spray	IEC 68-2-11
Mounting profile	2	Clamping force	CLEAR-defined

Dimension: mm



Tolerance: $\pm 0.3\text{mm}$

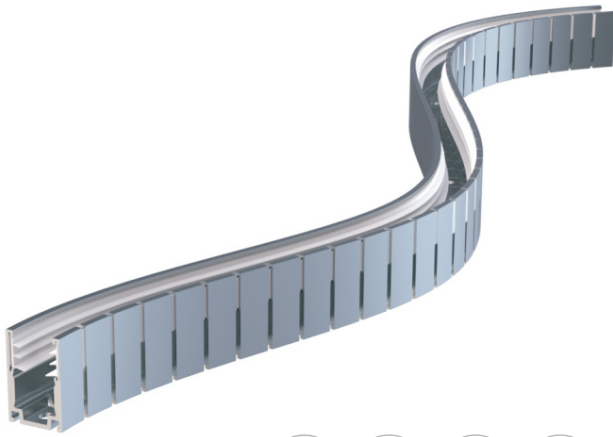


Note:

- 2-L1 refers to two of symmetric L1 in each piece of profile.
 - (N-1)-L2 refers to (N minus one) of symmetric L2 in each piece of profile.
- "N" hereby stands for its corresponding "Hole Number" in the below table

Item Code	Standard Length	L1	L2	Slotted Hole	Hole Number
F10-FSA/PL-20MM-AL	20mm/0.787in	10mm/0.39in	/	4*10mm/0.16*0.39in	1
F10-FSA/PL-500MM-AL	500mm/19.68in	50mm/1.97in	200mm/7.87in	4*10mm/0.16*0.39in	3
F10-FSA/PL-1000MM-AL	1000mm/39.37in	100mm/3.93in	200mm/7.87in	4*10mm/0.16*0.39in	5
F10-FSA/PL-2000MM-AL	2000mm/78.74in	100mm/3.93in	200mm/7.87in	4*10mm/0.16*0.39in	10

Bendable Serrated Aluminum Profile

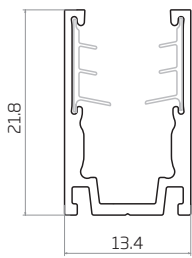


It is an expanded design of the serrated aluminum profile, and caters for the continuously streamlined aesthetics of curve shape. The secondary precision cutting process, not only maintains the advantage of clamping force, but also enables the two-way horizontal bending directions with super shape memory.

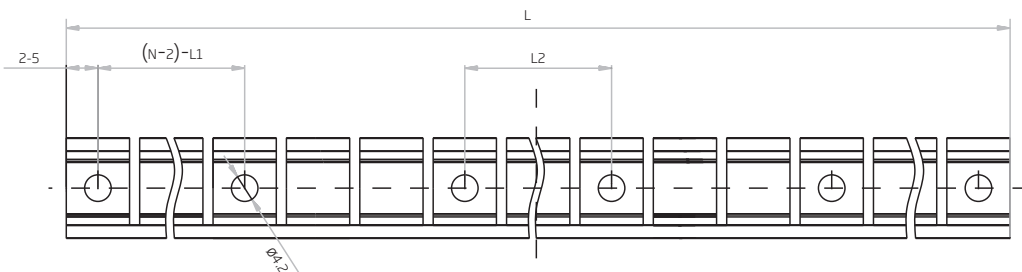
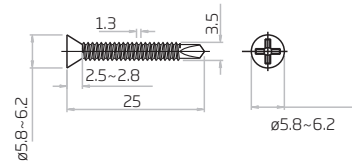
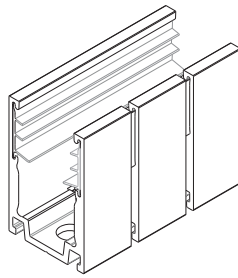
Please refer to the applicable installation ways.

Test Object	No.	Experiment Item	Standard
Metal Parts	1	Weather Resistance-Salt Spray	IEC 68-2-11
Mounting profile	2	Clamping force	CLEAR-defined

Dimension: mm



Tolerance: $\pm 0.3\text{mm}$



Note:

- 1-2-5 refers to two of symmetric 5mm in each piece of profile.
 2. (N-2)-L1 refers to (N minus two) of symmetric L1 in each piece of profile.
- "N" hereby stands for its corresponding "Hole Number" in the below table

Item Code	Standard Length	L1	L2	Screw Hole	Hole Number
F10-BSA/PL-500MM-AL	500mm/19.68in	116.5mm/4.59in	23.3mm/0.92in	$\phi 4.2\text{mm}/0.17\text{in}$	6
F10-BSA/PL-1000MM-AL	1000mm/39.37in	116.5mm/4.59in	58.2mm/2.29in	$\phi 4.2\text{mm}/0.17\text{in}$	10