



DIGITAL CATALOGUE 2024

LARS - Manufacturer since 1965

LARS is a distinguished **high-quality lighting systems** manufacturer headquartered in central Europe.

With a rich legacy dating back to **1965**, LARS has evolved into a thriving three-generation family business, dedicated to providing innovative lighting solutions that meet European quality standards.



A Pinnacle of High-Quality Lighting Innovation

LARS specializes in crafting **premium cinema LED profile systems** and LED step-nosing profiles, tailored to meet the unique demands of ambitious cinema projects. Our commitment to quality is unwavering, and we take pride in guaranteeing the superiority of our products.



LARS Lighting Enhancing Safety and Atmosphere

Designed for application in low-light environments such as cinemas, theatres, and other public spaces, our LED lighting profile systems serve a dual purpose—guiding visitors with precision and enhancing safety while creating an immersive atmosphere. Distinguished by their durability and remarkable energy efficiency, **LARS lighting solutions have the power to intensify the visual appeal and ambiance of any space they illuminate, making them an ideal choice for those seeking excellence in lighting technology.**

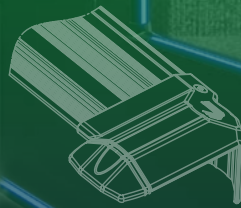


HEAVY-DUTY CABLE COVER WITH LEDS

CROSSLINE



PATENTED





HEAVY-DUTY CABLE COVER WITH LEDS

CROSSLINE

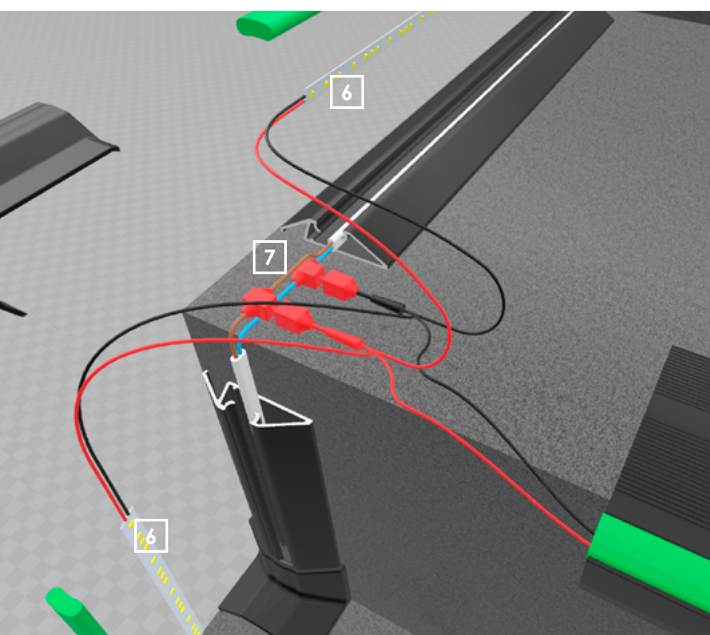
CROSSLINE is a brand new cable cover system with LED lighting. Created in answer to the need for **simple and aesthetic installation of cables** for LED stair nosing profiles.

Our specially designed profile allows you to **run wires without the need for surface milling**. In addition, it provides the completely new possibility of linear horizontal and vertical lighting of the steps, giving you the chance to create even more impressive lighting effects.

Thanks to the **metal structure and the highest quality** that characterizes the entire LARS family of products, the CROSSLINE cable cover system with LEDs sets a new direction in stair lighting for the entertainment industry.

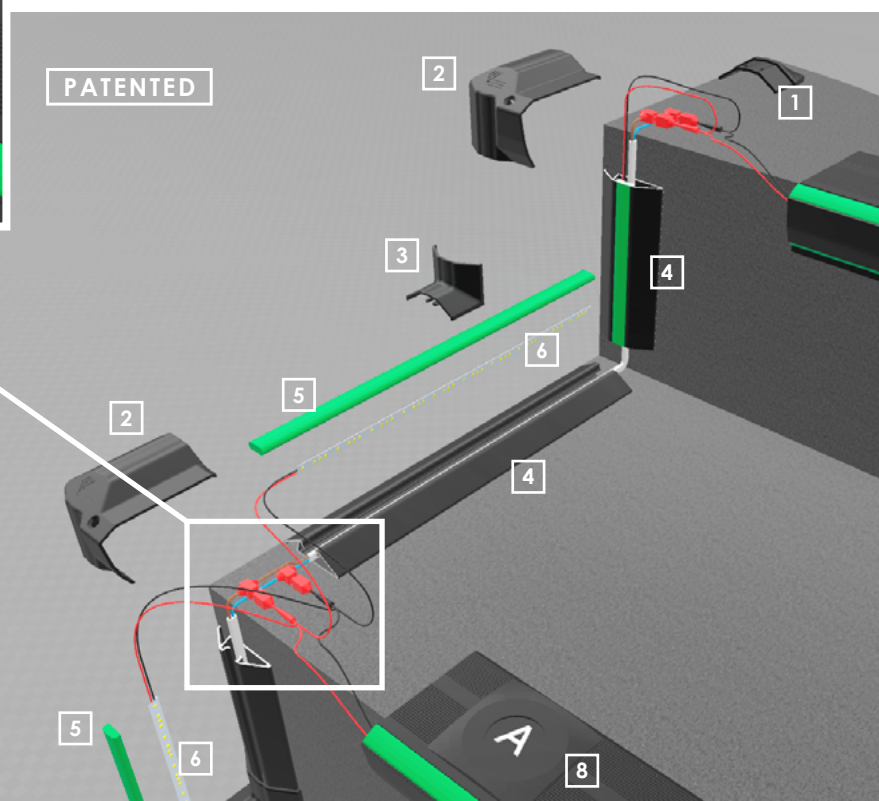
CROSSLINE system is also available **without LED lighting**.

Crossline fits to **Duo Led Uni** and **Stepline** profiles.



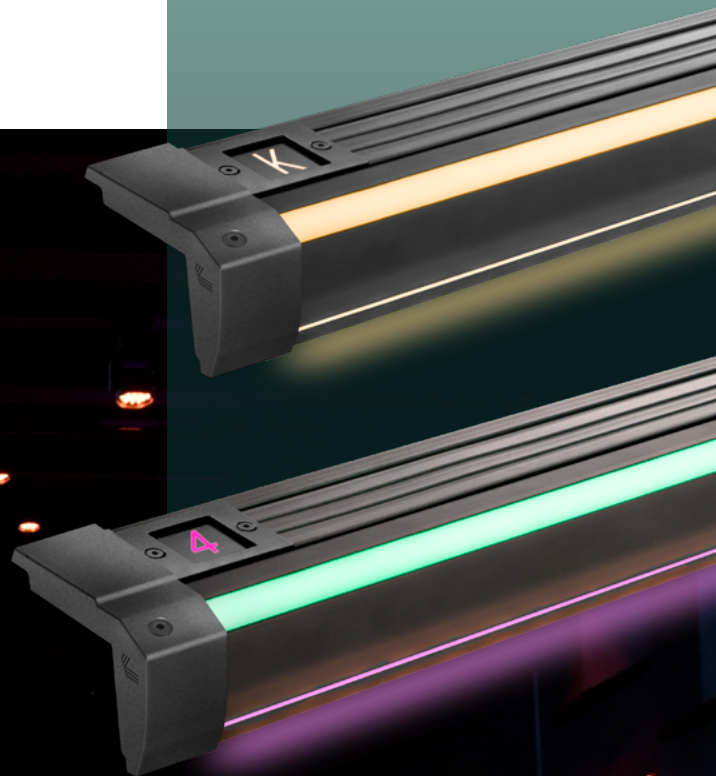
- 1** End cap
- 2** Tread cap L (left)
- 3** Angle cap
- 4** CROSSLINE cable cover
- 5** Diffuser
- 6** LED strip
- 7** Wires
- 8** Row mark

This product contains a light source with energy efficiency class E, F, G.



PREMIUM STAIR PROFILE

STREAMLINE DUO



Made of aluminum



Available in silver and black



Top and bottom LED light



Illumination of the LED row number



Linearity of the top light



Adjustable caps for easy installation



No visible mounting screws

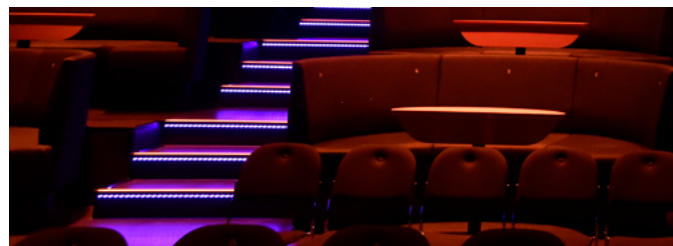
PREMIUM STAIR PROFILE

STREAMLINE DUO

This product contains a light source with energy efficiency class E, F, G.



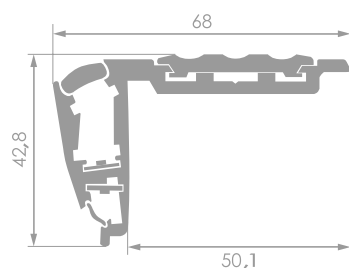
Streamline Duo, the pinnacle of stair profile innovation for professionals. This dual LED-illuminated profile boasts a special anti-slip insert and discreet mounting holes for a sleek finish. The unique adjustable caps not only offer an extended length of 1.4 cm but also ensure a flawless installation, accommodating variations in step measurements with unmatched adaptability.



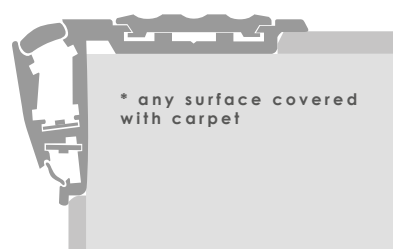
Technical data

Material	aluminium	
Profile colour	black, silver, powder coating according to RAL	
Profile variant	- with row number - without row number	
LedFLEX lighting	- monocolour: 60LED/m; 120LED/m; COB - RGB/ RGBW/ RGBWW: 30LED/m; 60LED/m; COB	
Colours	- opal - transparent - blue - red - gree - yellow - orange - black - any colour from RAL palette	
Input voltage	12V lub 24V DC Power supply for stair profiles must be SELV	
Power	monocolour: 1W/M ; 2,4W/M COB: 6W/M ; 15W/M *CUSTOM MADE RGB: 7,2W/M ; 14,4W/M RGB+W //WW: 15W/M *CUSTOM MADE	
Control	DALI ; PWM ; DMX ; KNX	
Protection degree	IP40	
Insole color anti-slip	- black - yellow - red	
Additional options	cut at an angle	

Dimensions [mm]

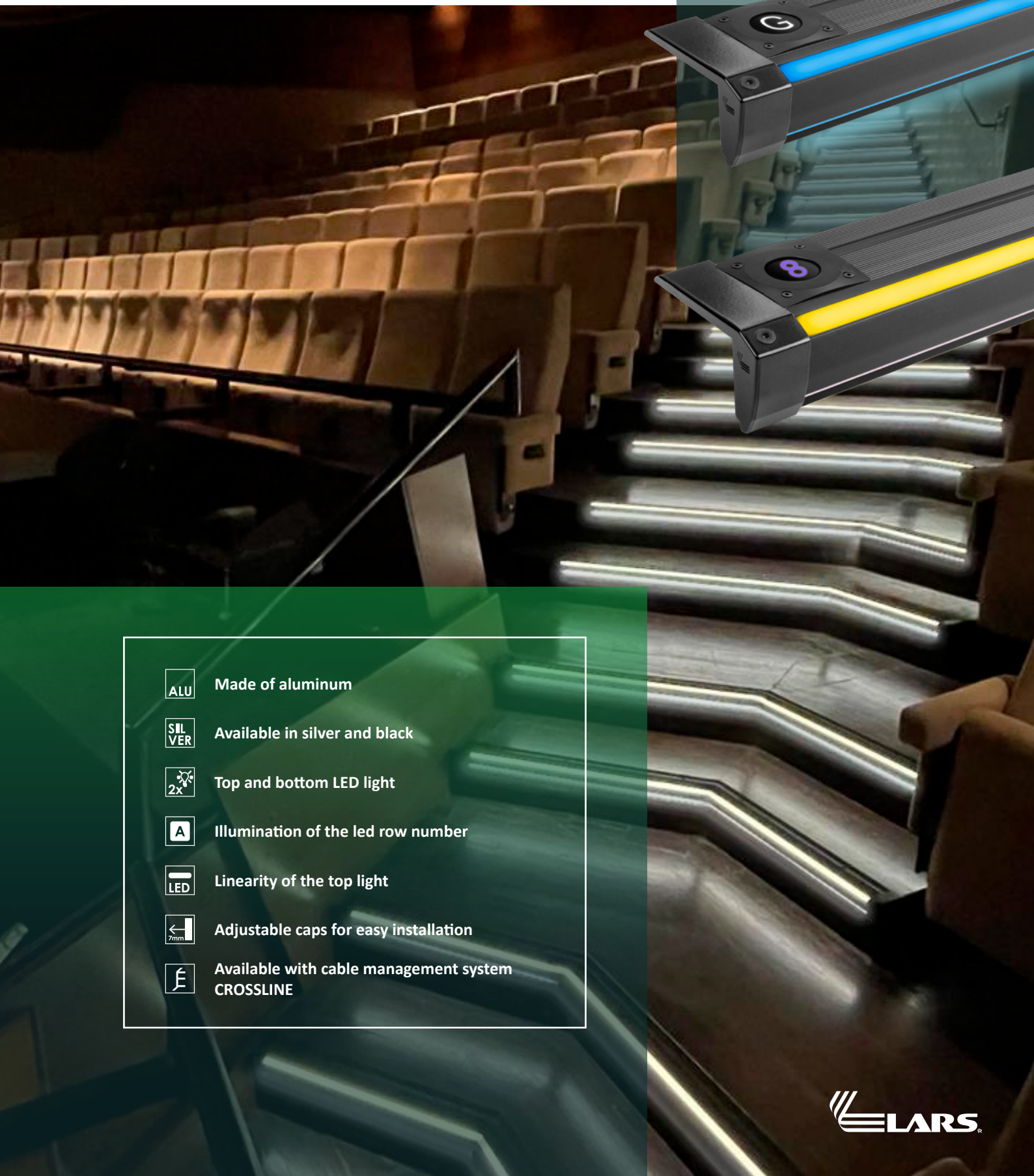


Montage



PREMIUM STAIR PROFILE

DUO LED UNI



Made of aluminum



Available in silver and black



Top and bottom LED light



Illumination of the led row number



Linearity of the top light



Adjustable caps for easy installation



Available with cable management system
CROSSLINE

PREMIUM STAIR PROFILE

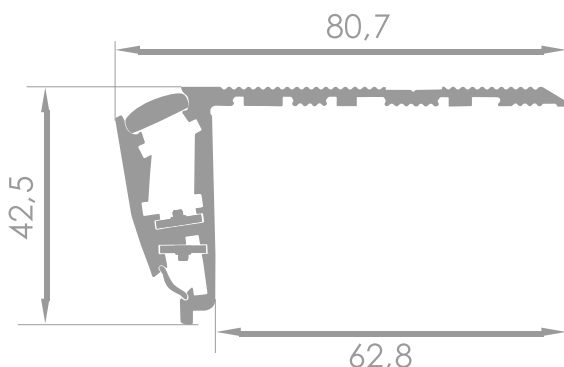
DUO LED UNI

This UNlversal Aluminum Stair Profile offers customizable RGB LED lighting, continuous aesthetic illumination, and adaptable installation on carpeted steps. Duo Led Uni ensures a seamless blend of style and functionality. With adjustable end caps and no visible LED points, it's the perfect choice for those seeking a sophisticated lighting solution.

Technical data

Material	aluminium		
Profile colour	black, silver, powder coating according to RAL		
Profile variant	- with row number - without row number		
LedFLEX lighting	- monocolour: 60LED/m; 120LED/m; COB - RGB/ RGBW/ RGBWW: 30LED/m; 60LED/m; COB		
Colours	- opal - blue - red	- transparent - green - black	- yellow - any colour from RAL palette
Input voltage	12V lub 24V DC Power supply for stair profiles must be SELV		
Power	monocolour: 1W/M ; 2,4W/M *CUSTOM MADE RGB: 7,2W/M ; 14,4W/M COB: 6W/M ; 15W/M RGB+W //WW: 15W/M *CUSTOM MADE		
Control	DALI ; PWM ; DMX ; KNX		
Protection degree	IP40		
Additional options	cut at an angle		

Dimensions [mm]



This product contains a light source with energy efficiency class E, F, G.



Montage



Standard variant



Variant with a space for carpet

PREMIUM STAIR PROFILE

STEPLINE



Made of aluminum



Available in silver and black



Illumination of the led row number



Available with LED light



Linearity of the top light



Adjustable caps for easy installation



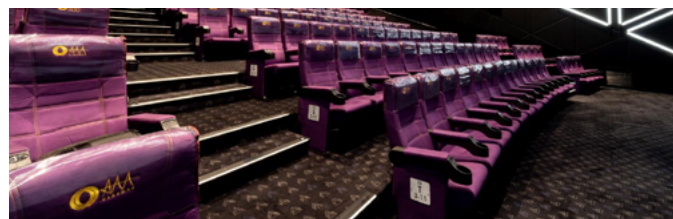
Available with CROSSLINE cable management system

PREMIUM STAIR PROFILE

STEPLINE

Stepline is a standard non-slip aluminum profile that fits any project. It not only enhances safety with illuminated step edges but also allows for personalized touches through optional illuminated markings like numbers, letters, or symbols. With Stepline, professionals can rely on guaranteed linearity of illumination and precise control over light intensity, ensuring a seamless integration of functionality and design in every project.

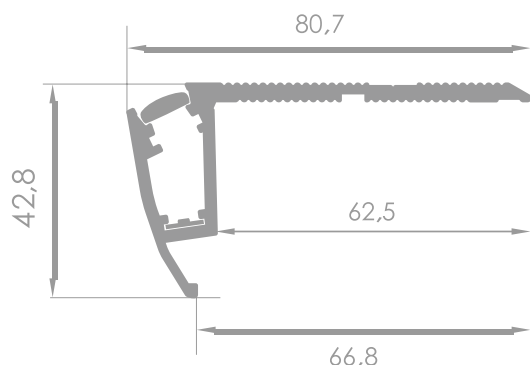
This product contains a light source with energy efficiency class E, F, G.



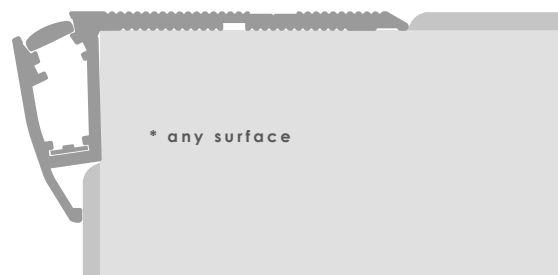
Technical data

Material	aluminium		
Profile colour	black, silver, powder coating according to RAL		
Profile variant	- with row number - without row number		
LedFLEX lighting	- monocolour: 60LED/m; 120LED/m; COB		
Colours	- opal - blue - red	- transparent - green - black	- yellow - any colour from RAL palette
Input voltage	12V lub 24V DC Power supply for stair profiles must be SELV		
Power	monocolour: 1W/M ; 2,4W/M *CUSTOM MADE		
Control	DALI ; PWM ; DMX ; KNX		
Protection degree	IP40		
Additional options	cut at an angle		

Dimensions [mm]

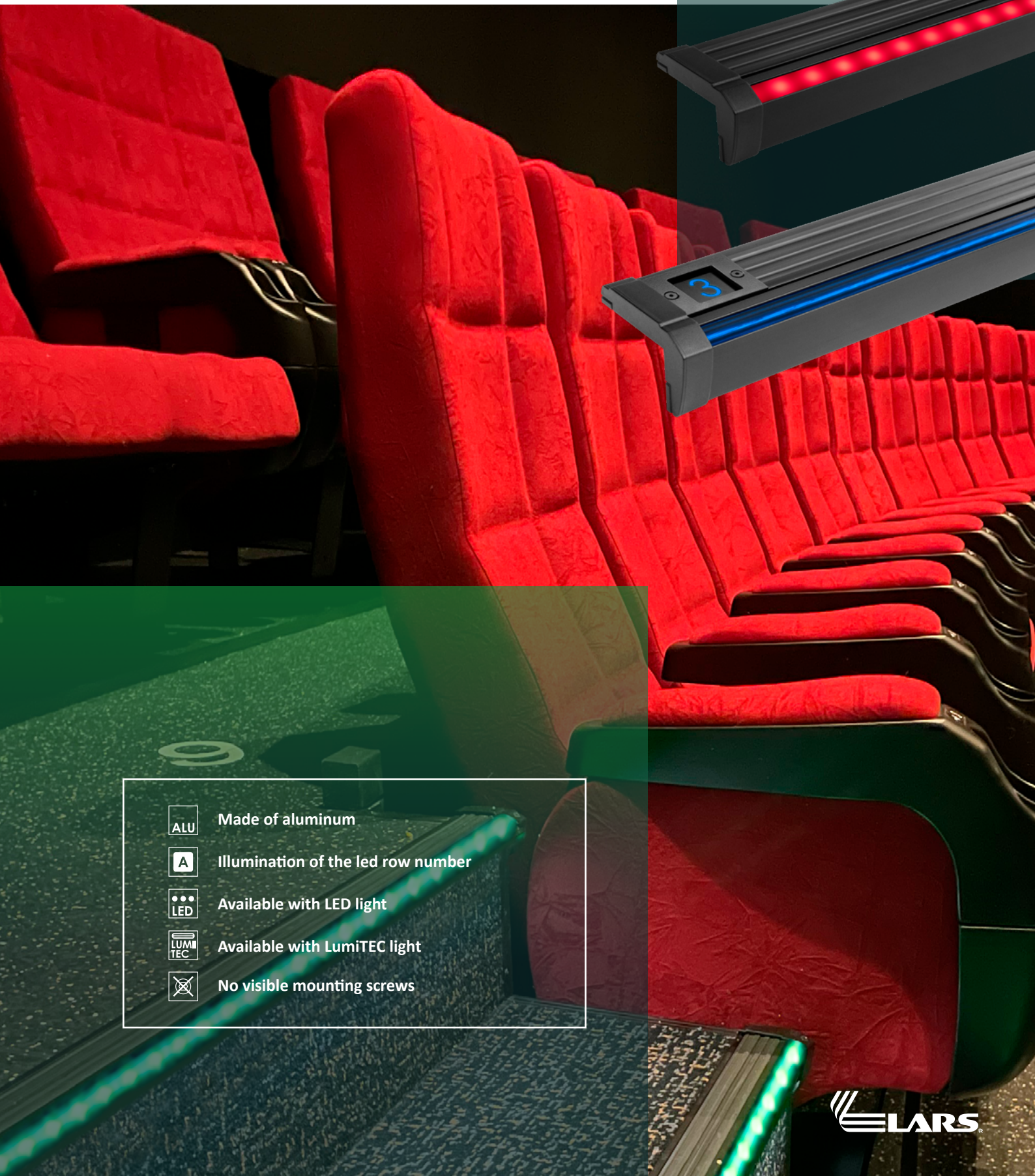


Montage



ECOMONY STAIR PROFILE

COMBO



Made of aluminum



Illumination of the led row number



Available with LED light



Available with LumiTEC light



No visible mounting screws

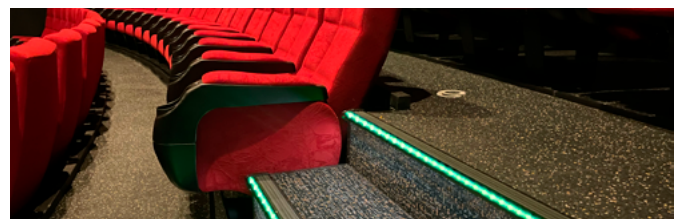
COMBO

Combo Profile, an essential for professionals seeking a discreet yet robust solution. This profile, secured to the unfinished step edge with screws, not only conceals tucked-under carpet seamlessly but also features an abrasion-resistant anti-slip insert. Engineered to withstand high stresses, Combo ensures both aesthetic finesse and durability in every step.

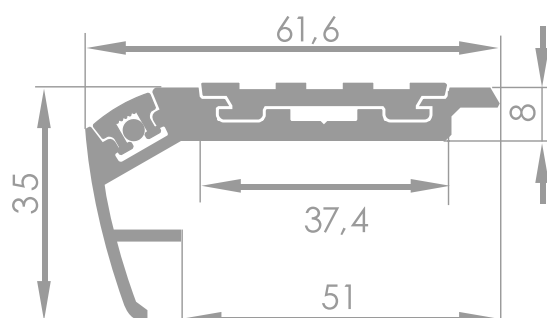
Technical data

Material	aluminium		
Profile colour	black, powder coating according to RAL		
Profile variant	- with row number - without row number		
LedFLEX lighting	- monicolor: 60LED/m; 120LED/m; COB		
Colours	- opal - transparent - yellow - blue - green - any colour from RAL palette - red - black		
LumiTEC lighting	white, turquoise, yellow, lemon, red, green, blue, pink, purple		
Input voltage	12V lub 24V DC Power supply for stair profiles must be SELV		
Power	monicolor: 1W/M ; 2,4W/M *CUSTOM MADE		
Control	DALI ; PWM ; DMX ; KNX		
Insole color anti-slip	- black - yellow - red		
Protection degree	IP40		
Additional options	cut at an angle		

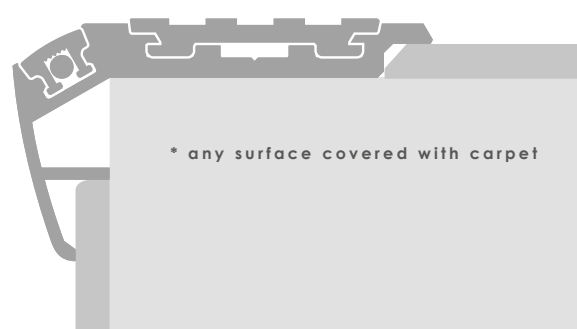
This product contains a light source with energy efficiency class E, F, G.



Dimensions [mm]

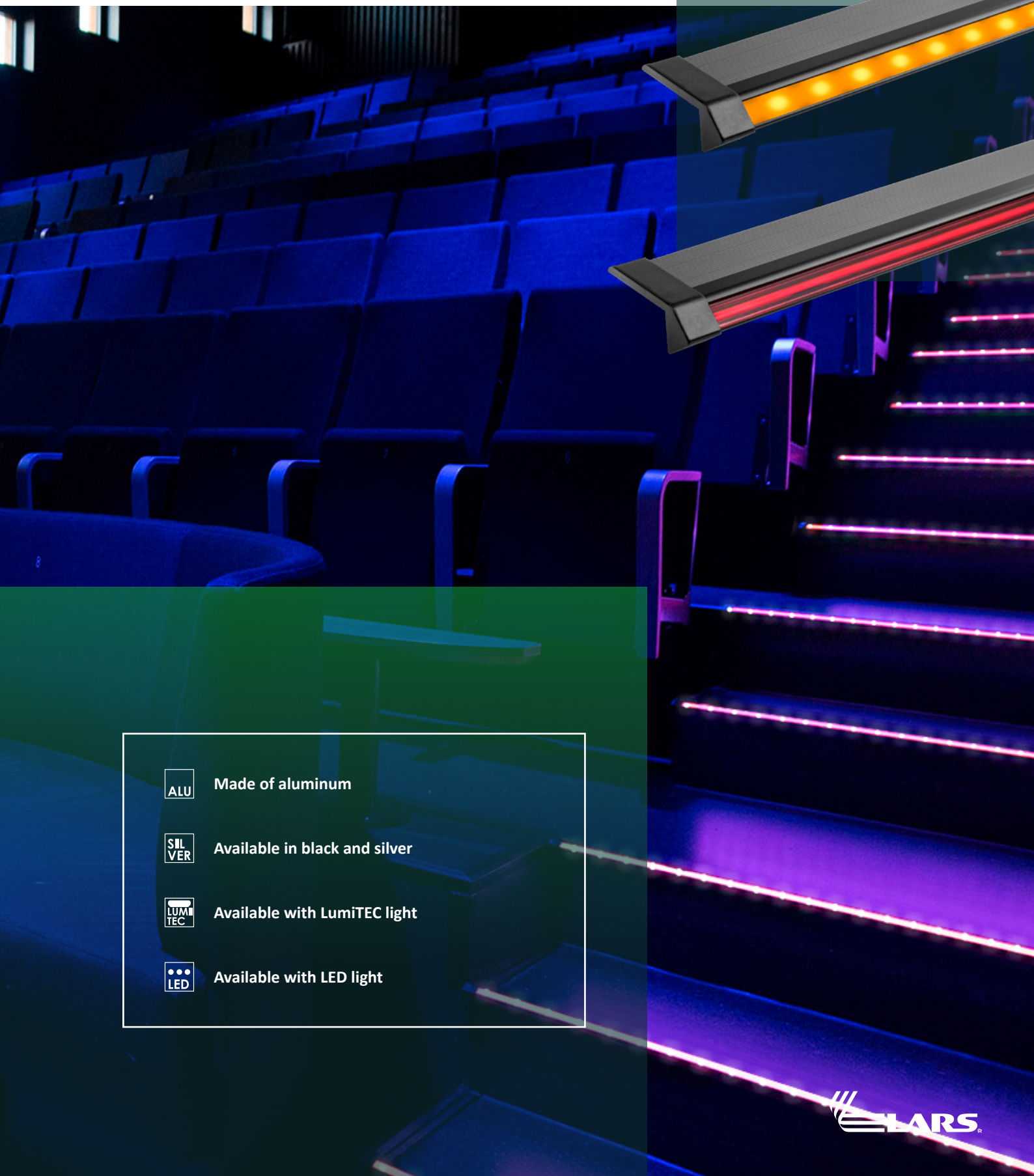


Montage



ECONOMY STAIR PROFILE

OVERLAPPED



Made of aluminum



Available in black and silver



Available with Lumitec light



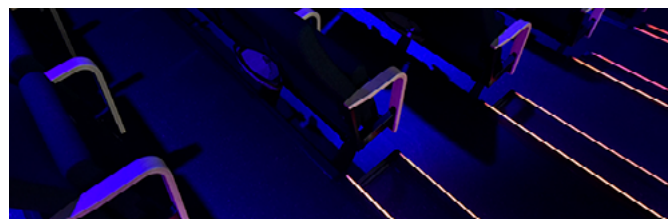
Available with LED light

OVERLAPPED

This product contains a light source with energy efficiency class E, F, G.



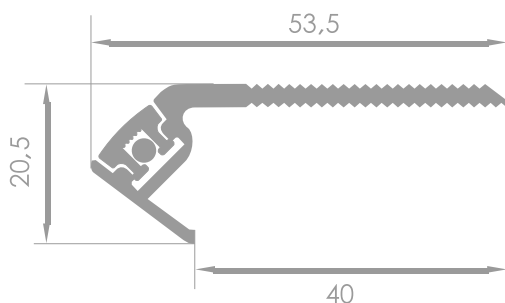
Overlapped Stair Profile, a sleek aluminum solution that seamlessly combines illumination and anti-slip functionality. Easily affixed to the finished edge of each step through either screws or adhesive, this profile not only enhances visibility but also ensures safety with its integrated anti-slip features.



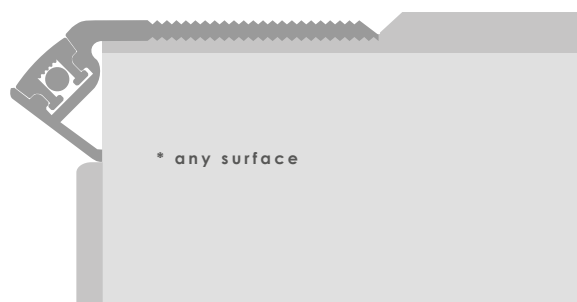
Technical data

Material	aluminium		
Profile colour	black, silver, powder coating according to RAL		
LedFLEX lighting	- monocolour: 60LED/m; 120LED/m; COB		
Colours	- opal - blue - red	- transparent - green - black	- yellow - any colour from RAL palette
LumiTEC lighting	white, turquoise, yellow, lemon, red, green, blue, pink, purple		
Input voltage	12V lub 24V DC Power supply for stair profiles must be SELV		
Power	monocolor 1W/M; 2,4W/M * CUSTOM MADE		
Control	DALI ; PWM ; DMX ; KNX		
Protection degree	IP40		
Additional options	cut at an angle, bending		

Dimensions [mm]

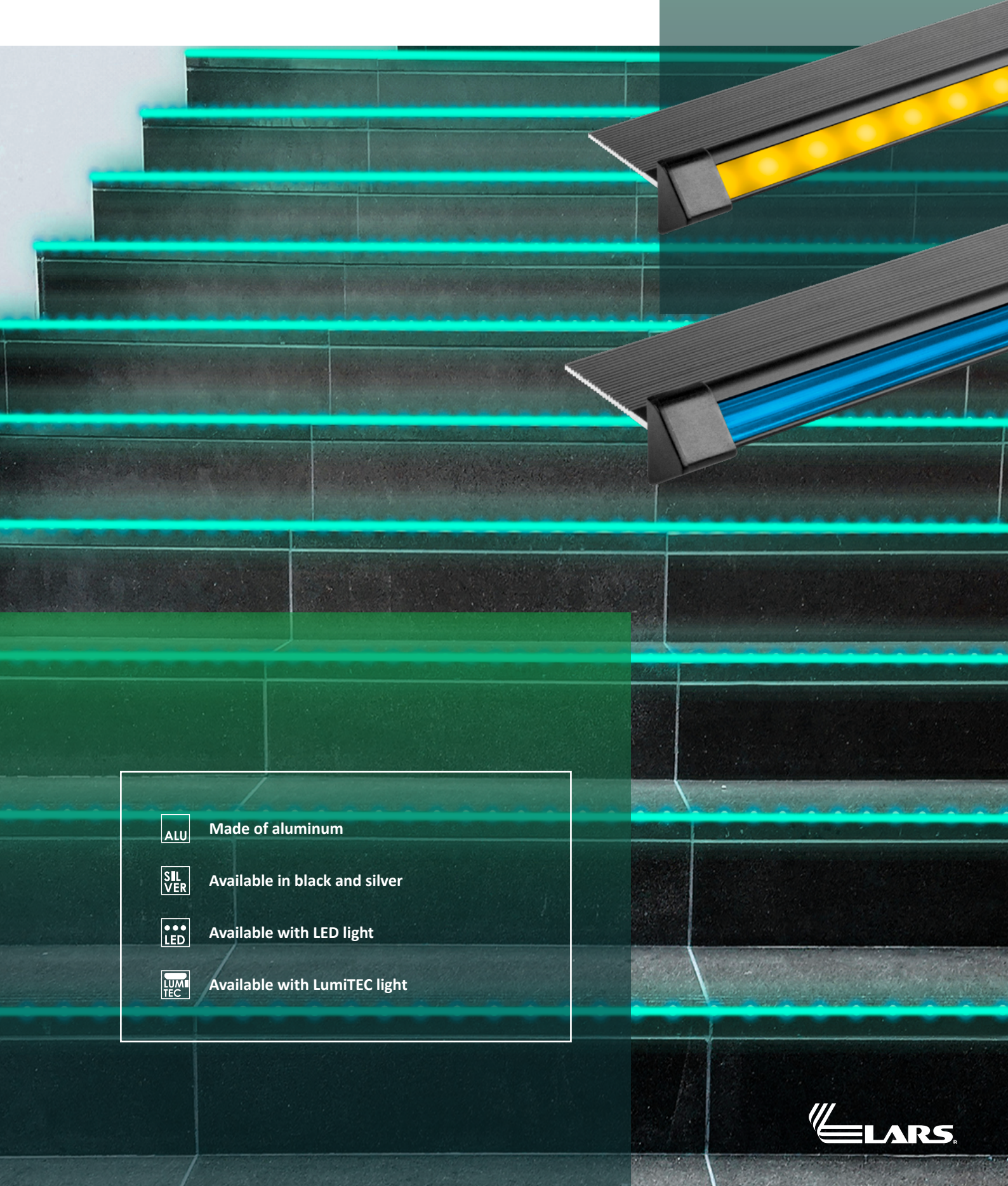


Montage



ECONOMY STAIR PROFILE

INTERNAL



Made of aluminum



Available in black and silver



Available with LED light



Available with LumiTEC light

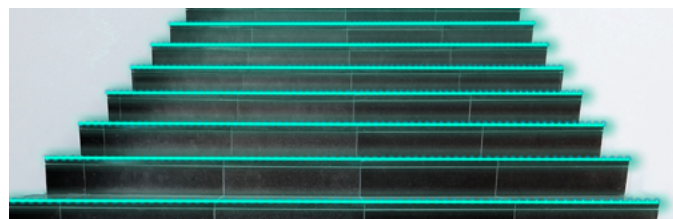
ECONOMY STAIR PROFILE

INTERNAL

This product contains a light source with energy efficiency class E, F, G.



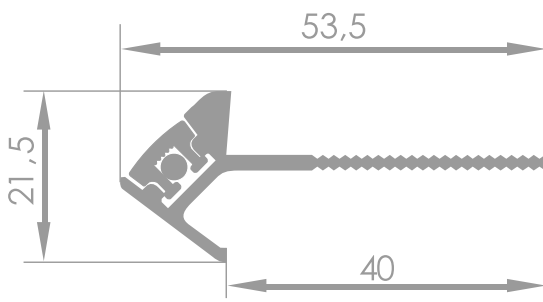
Internal Step Profile, an aluminum stair solution designed for seamless integration beneath ceramic tiles. This profile, equipped with discreet illumination, is tailored for installation within stair treads, providing a sleek and modern aesthetic for professionals working with ceramic tiles.



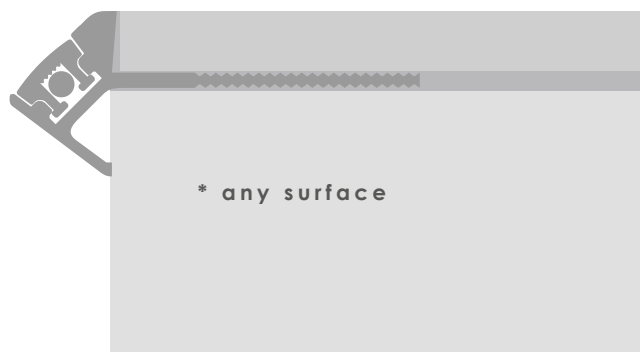
Technical data

Material	aluminium		
Profile colour	black, silver, powder coating according to RAL		
LedFLEX lighting	- monocolor: 60LED/m; 120LED/m; COB		
Colours	- opal - blue - red	- transparent - green - black	- yellow - any colour from RAL palette
Input voltage	12V lub 24V DC Power supply for stair profiles must be SELV		
Power	monocolor: 1W/M ; 2,4W/M *CUSTOM MADE		
Control	DALI ; PWM ; DMX ; KNX		
Protection degree	IP40		
Additional options	cut at an angle		

Dimensions [mm]



Montage



PREMIUM & ECONOMY STAIR PROFILES

SOLO ROW NUMBERS

Solo Row Numbers are the customizable LED solution for step nosing profiles, walls, floors, or seats. These illuminated numbers streamline visitor seating, enhancing traffic flow and overall safety. With the flexibility to depict any symbol, letter, or number, they cater to diverse design needs. Their easy installation and robust metal cover ensure longevity, making them a reliable choice for years of service.

Elevate both efficiency and aesthetics with Solo Row Numbers, offering a dynamic and enduring solution for professional spaces.



Match them with : STREAMLINE DUO, DUO LED UNI, STEPLINE AND COMBO



DUO LED UNI / STEPLINE

Technical data

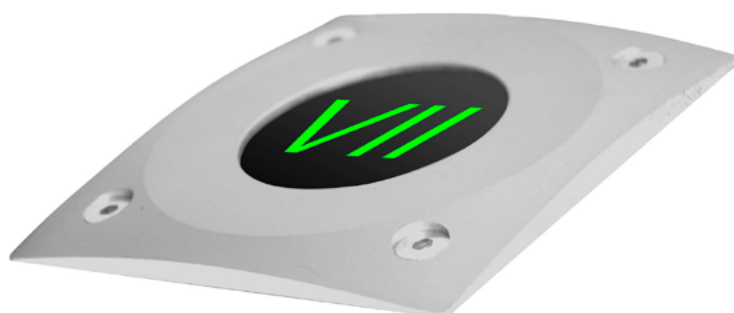
LEDs type	LedFlex SMD 3014
LEDs color:	optional (standard: 3000 K, 4000 K, 5000 K, red, blue, green, yellow, orange)
Input voltage	12 VDC / 24 VDC
Protection class	III
Power	0,3 W
Power cabel	2x0,5 mm ² length: 1000 mm
Material	aluminium (black, silver)
IP code	IP40
Storage temperature	0 - 40°C



Variants

- Assembly SOLO
- Profile Component

This product contains a light source with energy efficiency class G.



STREAMLINE DUO

Technical data

LEDs type	LedFlex SMD 3014
LEDs color:	optional (standard: 3000 K, 4000 K, 5000 K, red, blue, green yellow, orange)
Input voltage	12 VDC / 24 VDC
Protection class	III
Power	0,3 W
Power cabel	2x0,5 mm ² length: 250 mm
Material	aluminium (black, silver)
IP code	IP20
Storage temperature	0 - 40°C



Variants

- Assembly SOLO
- Profile Component

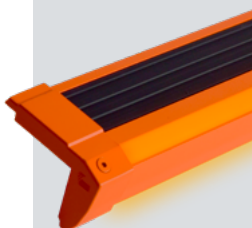
This product contains a light source with energy efficiency class G.



Now
available
in
RAL
colours!

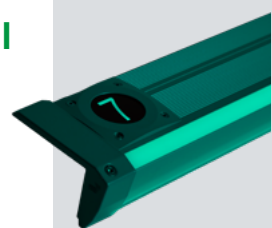
STREAMLINE DUO

Step-nosing
profile with
double
LED illumination



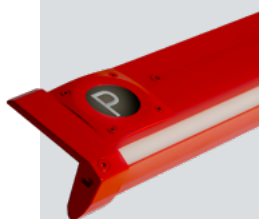
DUO LED UNI

A UNlversal
aluminum
step-nosing
profile with LED
illumination



STEPLINE

Illuminated
aluminium
step-nosing
profile



COMBO

Step-nosing
profile with
illumination



STREAMLINE DUO/COMBO

Customisable
led row
number/sign



DUO LED UNI/ STEPLINE

Customisable
led row
number/sign

