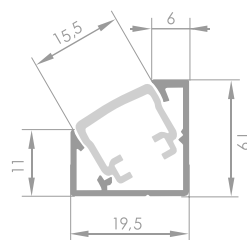




LA

The LA profile is intended to be installed in corners where two surfaces come together. It works perfectly for decoration purposes and can be mounted under cabinets, foot of the walls and ceilings.

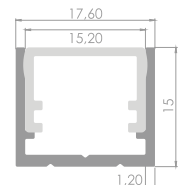


Profile colours: ■



LA 3

The LA3 profile is 15 mm high, available in silver or black anode with a opal white cover. Thanks to rotating end caps, it is perfect for illumination of cabinets, display cases and those surfaces that require precise lighting at a selected angle.

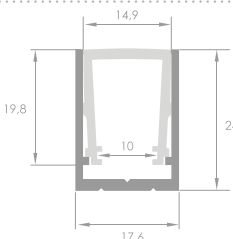


Profile colours: ■ ■

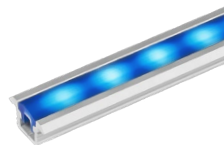


LAP

LAP profile with a large luminous area. Due to the large distance of the lampshade from the light source, the profile ensures linearity of the backlight (no visible LED points) with a relatively small number of LEDs on the strip. Thanks to this, the LAP profile is one of the profiles most frequently used by architects.

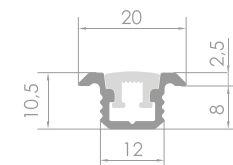


Profile colours: ■ ■

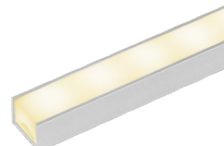


SIMPLE 1

Simple 1 is a recessed LED profile for installation and internal assembly. Simplicity is its main advantage. The profile does not require end caps or any special mounting brackets. The profile is intended to be imbedded in flat surfaces such as walls, floors, countertops, etc.

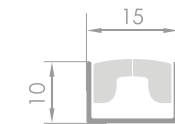


Profile colours: ■ ■



SIMPLE 2

Simple 2 is an LED profile for internal mounting. Its main advantage, as in the case of the Simple 1 profile, is simplicity. The profile does not require caps or any special mounting brackets. The profile will work in flat surfaces such as walls, countertops, as a profile for the cabinet etc. The Simple 2 is not intended for being embedded in surfaces.

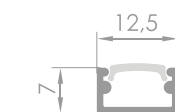


Profile colours: ■

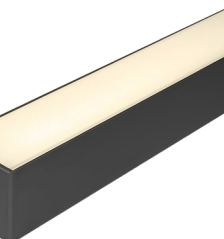


SIMPLE PCV

Simple PVC is the only plastic profile in the offer. It is available in three different colours to match the colours of furniture but it can be also placed on the floors or walls, as well as to mark the steps, edges and corners.

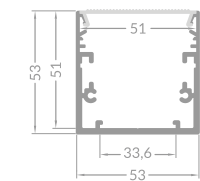


Profile colours: ■ ■ ■



JUMBO

The Jumbo profile comes from our large-size family range. It gives us a variety of options, such as hanging decorative luminaire or directly surface-mounted one. This profile, thanks to its large size, allows the installation of the LedFlex LED-band at different heights in order to achieve the lighting effect expected by the customer (mounting the strip on an additional aluminum fastening).



Profile colours: ■ ■ ■



| | LM | LM SLIM | LR | LB | LF | LP | LS | LT | LD | LD XL | LA | LA 3 | LAP | SIMPLE 1 | SIMPLE 2 | SIMPLE PCV | JUMBO |
|--|----|---------|----|----|----|----|----|----|----|-------|----|------|-----|----------|----------|------------|-------|
| ALU | ✓ | ✓ | ✓ | ✓ | ✓ | ✓ | ✓ | ✓ | ✓ | ✓ | ✓ | ✓ | ✓ | ✓ | ✓ | — | ✓ |
| Original end caps and mounting kit | ✓ | ✓ | ✓ | ✓ | ✓ | ✓ | ✓ | ✓ | ✓ | ✓ | ✓ | ✓ | ✓ | — | — | — | ✓ |
| Easy-ON diffuser | ✓ | ✓ | ✓ | ✓ | ✓ | ✓ | ✓ | ✓ | ✓ | ✓ | — | — | — | — | — | — | — |
| Indoor mounting | ✓ | ✓ | ✓ | ✓ | ✓ | ✓ | ✓ | ✓ | ✓ | ✓ | ✓ | ✓ | ✓ | ✓ | ✓ | ✓ | ✓ |
| Linear effect option (no LED points visible) | — | ✓ | ✓ | ✓ | — | ✓ | ✓ | — | ✓ | ✓ | ✓ | ✓ | ✓ | — | — | — | ✓ |
| Shadowline option | ✓ | ✓ | ✓ | ✓ | ✓ | ✓ | ✓ | — | — | — | — | — | — | — | — | — | — |
| Recessed LED profile (to be embedded in the surface) | — | — | — | ✓ | ✓ | — | — | ✓ | ✓ | ✓ | — | — | — | ✓ | — | — | ✓ |
| Wide-angle light distribution | — | — | — | — | — | — | ✓ | — | — | — | ✓ | ✓ | — | — | — | — | — |
| Waterproof | — | ✓ | — | — | — | — | — | — | ✓ | ✓ | — | — | — | — | — | — | — |
| Outdoor mounting | — | — | — | — | — | — | — | — | ✓ | ✓ | — | — | — | — | — | — | — |

Available control systems

Interface: **DALI, KNX, DMX**

Smartphone: **iOS, Android**



14 Swierkowa Street
64-320 Niepruszewo
POLAND

+48 61 840 40 70
lighting@lars.pl
www.lars.pl/en

Simply brighter.

ver. 1.6

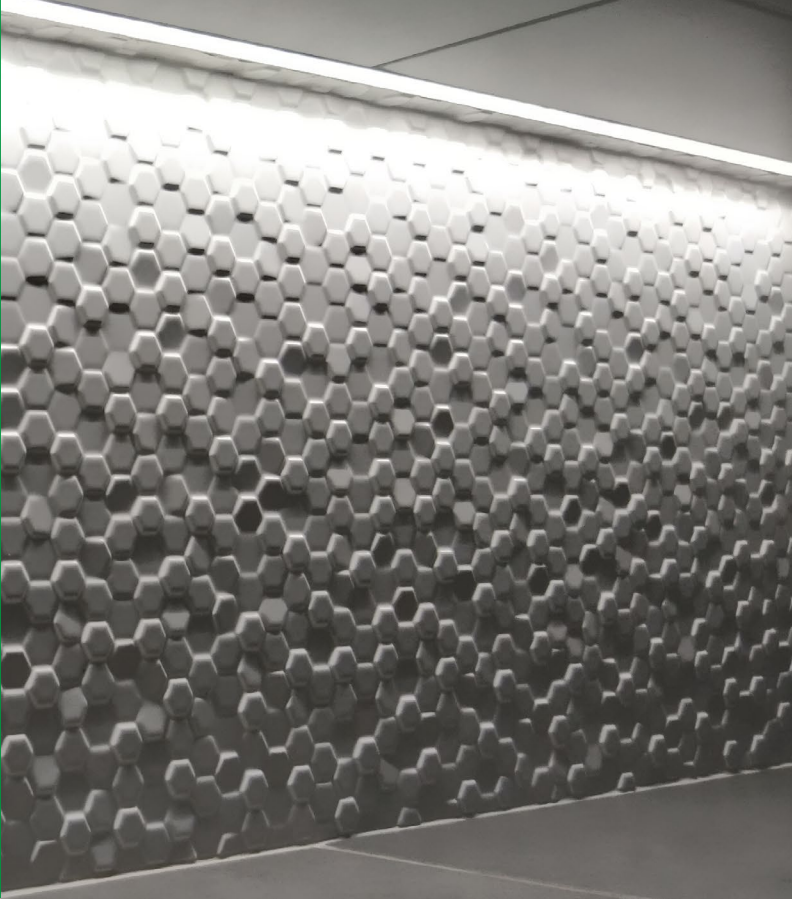


LED profiles

Backlight solutions for furniture, walls, ceilings, floors and others

Universal LED profiles

When choosing the backlight you should consider where the assembly place is and what effect you want to achieve. A well-chosen backlight adapts to the space and not only emphasizes what is beautiful, it sets the right ambience and influences the behaviour of people. Our family of universal LED profiles consist mainly of solid aluminium solutions that are characterized by high aesthetics, safe use and long life.



Diffusers

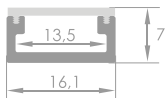
The LM, LR, LF, LB, LP and LS profiles are available in four variants:

| | |
|---|--|
|  <p>CLEAR Clear diffuser</p> <p>Light transmittance 99%. Ideal for when you need a high brightness.</p> |  <p>FROSTED Frosted diffuser</p> <p>Light transmission 70%. Works well whenever there is a need for a light blur effect, but maintenance of high brightness.</p> |
|  <p>OPAL Opal diffuser</p> <p>Light transmission 50%. Perfect when you want to achieve the effect of well scattered light and blur of sharp light. In LR, LB, LP, LS and LAP profiles, the opal diffuser allows you to hide LED points and obtain linear lighting.</p> |  <p>SHADOWLINE Black diffuser</p> <p>Light transmittance 30%. It is great in dark spaces, such as clubs, cinemas, theatres, modern hotels and restaurants. The black diffuser ensures the profile remains hidden until lighting is on.</p> |



LM

LM is one of the smallest profiles in the range. Due to the small size, the profile is very discreet and light, which makes it ideal as exhibition lighting, for lighting display cases, furniture or in interior architecture as, for example, LED profile for the cabinet.



Profile colours:  

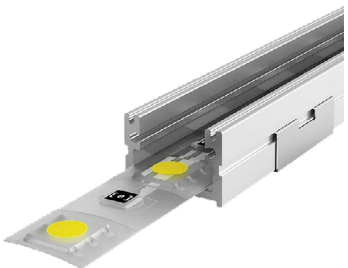


LM SLIM

The LM Slim profile is our newest and the smallest profile from the universal family. Its height is 4.05mm, available in two anodes black and silver. The profile is ideal for use on such surfaces as walls, furniture, shelves and similar areas that require the minimum dimensions of the profile.

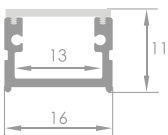


Profile colours:  

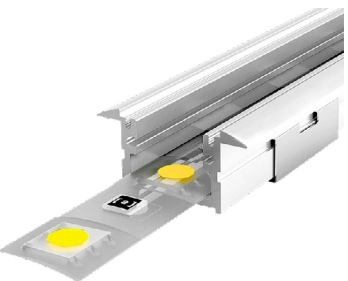


LR

LR is a profile used mainly in interior design, in spaces such as a kitchen, corridor or living room. The profile is also often used in scenography to emphasize the outlines of ceilings and walls.

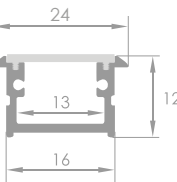


Profile colours:  



LB

LB is a recessed LED profile. LB works as a backlight for cabinets, spatial contours and ceilings. The profile is available with a linear backlight option (no visible LED points).

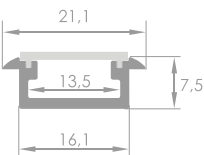


Profile colours:  



LF

LF is our smallest recessed LED profile. The profile was created for small areas with a small thickness. Thanks to the small dimensions, the LF profile discreetly retracts in the surface, while maintaining a significant light efficiency.

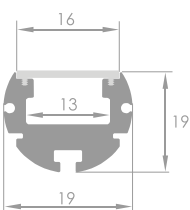


Profile colours:  

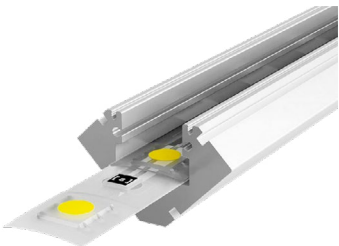


LP

LP is a modern LED profile with a circular cross-section of the luminaire. The profile is successfully used in the furniture industry, walls, on the contour of surfaces or as a pipe for hangers in wardrobes.

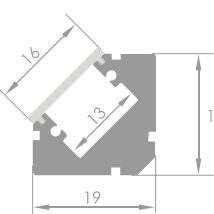


Profile colours:  



LS

LS is an angle LED profile that directs the light, perfectly emphasizing the outline of the floor, ceiling or wall. LS differs from other universal profiles in that it works brilliantly in highlighting sculptures, exhibition products or furniture. The light distribution elevates ordinary products into spectacular ones.

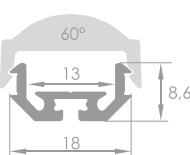


Profile colours:  



LT

LT is a built-in profile with a diffuser to distribute light at a broader angle (60°) than profiles with flat diffusers. The aesthetic form of the profile and a clear light effect means the profile eagerly used in interior architecture as well as in cinemas and theatres as wall illumination.

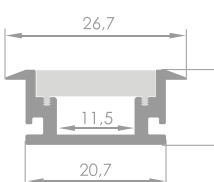


Profile colours: 



LD

LD is a waterproof recessed LED profile. Thanks to the high IP (IP54), the profile works well in the kitchen and bathrooms as well as in more extreme conditions, such as roofs and façades. It is used to highlight outlines or as a decorative element.

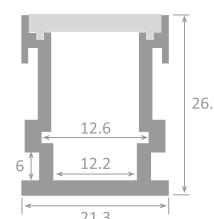


Profile colours: 



LD XL

LD XL is a profile from the Universal Profiles series, dedicated for outdoor and indoor installation. It is made of high-quality pure aluminum, available in a silver anode. It is suitable for lighting stairs and floors, and is also perfect for gardens, bathrooms, corridors, balconies etc.



Profile colours: 

FOR MORE INFORMATION VISIT OUR WEBSITE www.lars.pl/en